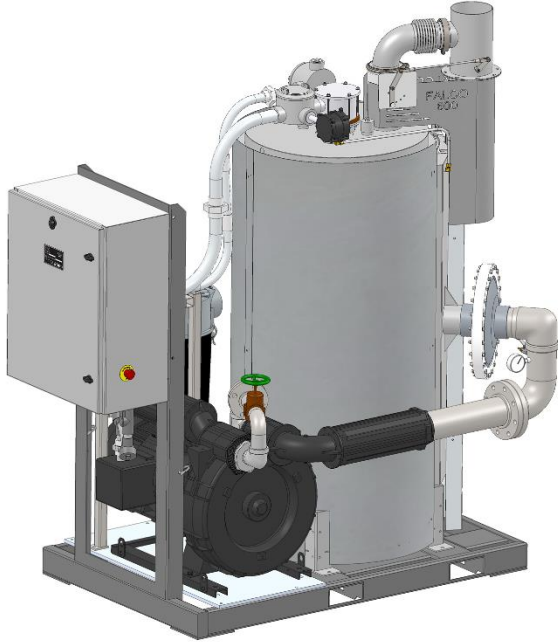


FALCO 600 with 20 hp Booster Blower



The FALCO 600 with booster blower is an ideal solution for low concentration applications when active vapor control is not required and source flow doesn't fluctuate. Applications include air strippers and low concentration manufacturing applications.

The system can accept incoming flow rates up to 650 scfm. A recirculation valve allows adjustment of booster blower flow between 450 and 700 scfm.

This system may also be used in high vacuum soil vapor extraction applications where the source flow rate is low but high in concentrations. In such cases, the booster blower adds large amounts of dilution air which maximizes productivity and doesn't affect well vacuum. A FALCO Vapor Control Valve can be installed on the vacuum side of the claw blower to provide active vapor control.

Components are mounted on stainless steel frames which support the FALCO 600, blower, and accessories. This low-profile system weighs only 2,450 lb. and is 50" wide, 78" long, and 87" tall. This standardized package is easily installed and operated and can be integrated into a wide range of process air streams.

Packaged system includes the following:

- FALCO 600 Catalytic Oxidizer
- FPZ 20 hp, three phase, explosion proof, regenerative blower (model SCL K12-MS-GOR-C1070-XP)
- Solberg inline process air and 4" dilution air filter
- Stainless steel vacuum and pressure gauges
- Recirculation valve for flow adjustment
- Mounting frame, stainless steel factory piping and wiring between FALCO 600 and blower
- Third Party approval for use in Class 1, Division 2, Group D Hazardous Locations

FALCO 600 specifications:

- CAPACITY 300-700 scfm (dilution air + process flow)
- MAXIMUM INPUT LOADING 0.3 lb/min VOCs @ 19,000 BTU/lb (5668 BTU/min)
- DESTRUCTION EFFICIENCY Up to 99.5%
- CATALYST OPERATION RANGE (standard) 330-620°C (626-1148°F)
- CATALYST Packed bed 4.9 cubic feet. Precious metal on 1/8" ceramic beads is standard. Alternate catalysts are available
- HEAT EXCHANGER Stainless steel spiral plate. 73% efficient at 600 scfm.
- HEATER (Electric Solid State Control) 75 amp @ 208 V (27 kW), 87 amp @ 240 V (36 kW) or, 44 amp @ 480 V (36 kW)
Canada: 69 amp @ 208 V (25 kW), 80 amp @ 240 V (33kW)
40 amp @ 480 V (33 kW)
- CONSTRUCTION 304 stainless steel heat exchanger
Stainless steel frame, stainless steel piping
- POWER REQUIREMENTS Heater and Blower: 3 phase 480V, *Optional* 3 phase 208-240 V
Controls: 120 V



FALMOUTH PRODUCTS – A division of Product Recovery Management, Inc.
200 20th Street, Butner, NC, 27509
Phone 508 548 6686 www.falmouthproducts.com
sales@falmouthproducts.com