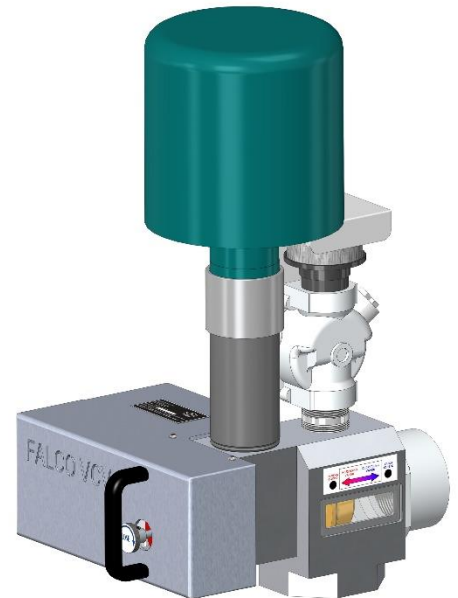
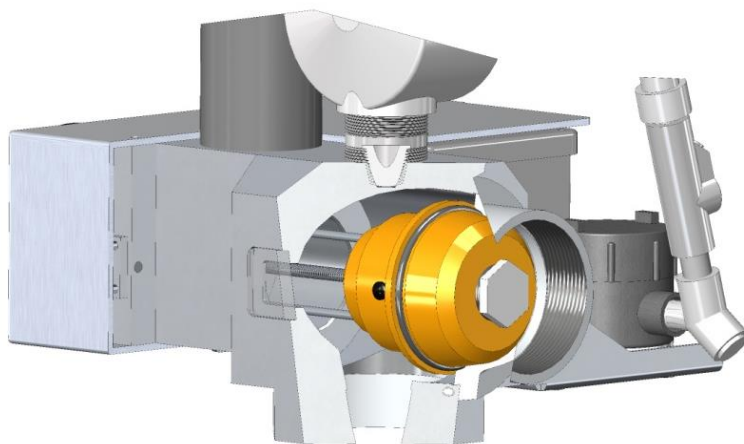


## ***FALCO 600 VAPOR CONTROL VALVE (VCV)***

Precise vapor control is critical to successful soil vapor extraction and treatment projects. Falmouth Products Vapor Control Valve (VCV) is installed in-line on the vacuum side of the extraction blower. The VCV enables the FALCO 600 to start up, operate automatically, and cooperate with the temperature controllers to regulate input vapors. Power use is minimized by accurately maintaining maximum input concentration consistent with the heat recovery adjustment.

The VCV includes a valve body, valve disc, two valve seats, a solenoid dilution valve, and a gear motor. Dilution air and source vapors are simultaneously regulated by positioning the valve disc. The motor progressively opens or closes the valve in response to input from three temperature controllers. Controller rate alarms limit how quickly the VCV introduces vapors. The solenoid valve can provide rapid introduction of dilution air, regardless of valve disc position. The VCV automatically returns to its closed position each time FALCO power is cycled.

- Third Party approval for use with FALCO 600 in Class 1, Division 2, Group D hazardous locations
- Aluminum valve body and covers
- Weatherproof design for continuous outdoor operation
- ACME thread lead screw provides low friction and long life
- Indicator window shows valve position and knob shows direction (open/close)
- Terminal blocks allow simple field wiring to FALCO control panel
- 4" vapor inlet/outlet. 2" solenoid dilution valve and 3" main dilution air inlet
- Pressure drop when fully open (dilution closed): 7" H<sub>2</sub>O @ 600 CFM
- Weight with filter 61 lbs. Height 30", Width 14.75", and length 20"



# **FALCO**

**FALMOUTH PRODUCTS – A division of Product Recovery Management, Inc.**  
200 20<sup>th</sup> Street, Butner, NC, 27509  
Phone 508 548 6686 [www.falmouthproducts.com](http://www.falmouthproducts.com)  
[sales@falmouthproducts.com](mailto:sales@falmouthproducts.com)

Rev 9-8-22